

Diaphragm seal

threaded process connection
flush diaphragm

Applications

- picturesque lines
- corrosive, viscous or crystallizing media
- high temperature

Standards / Approvals

- ISO 228-1
- ASME B 1.20.1
- DIN 13-1



Features

- threaded connection
- flush diaphragm
- welded design
- wide range of instrument connections

Pressure rating

- 600 bar

Process connection*

- 1/2", 1", 1-1/2", 2" BSPP
- M30x2
- M48x3
- other on request

Instrument connection

- 1/2" BSPP, NPT
- 1/4" BSPP, NPT
- M20x1,5
- other on request

Wetted parts material

- 304 (1.4301) stainless steel
- 316L (1.4404) stainless steel
- other on request

Filling fluid

- silicone oil (max. 200°C)
- high temperature oil (max. 315°C)
- oil for vacuum service
- vegetable oil
- fluorine oil
- other on request

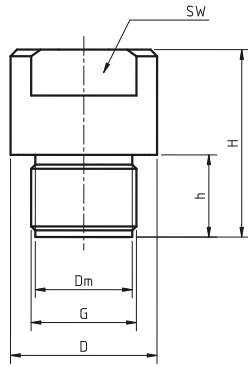
Optional capillary

- length up to 15m
- armored, axial entry
- 304 (1.4301) stainless steel

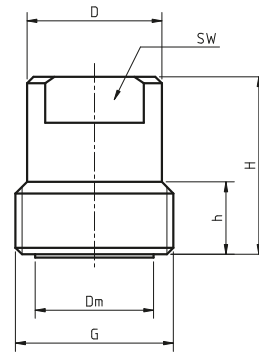
Options

- radiator
- other diaphragm seal body diameter

* available size limited by range and instrument type



1/2", 1", 1-1/2" BSPP process connection



2" BSPP or M48x3 process connection

Sample dimensions (in mm)

G	D _m	D	h	H	SW
1/2" BSPP	17,5	25,9	19,5	52	32
1" BSPP	29,5	44,6	25	57	36
1-1/2" BSPP	36	55	24	55	32
2" BSPP	48	70	30	52	54
M30x2	26	39,8	25	57	32
M48x3	36	40	22	54	32

Ordering: model - process connection - material (diaphragm, body) - capillary length (if applicable) - instrument connection - other options or requests

For proper diaphragm seal manufacturing and calibration, process data - temperatures, pressures and media type - should be provided.