

Diaphragm seal

flanged process connection
chemical-resistant

Applications

- chemical and petrochemical
- highly corrosive, toxic, requiring special materials media

Standards / Approvals

- EN 1092-1 / DIN 2501
- ASME B 16.5
- other on request



Features

- flanged connection
- multiple combinations of sealing face and high resistant diaphragm materials
- enlarged effective diaphragm diameter

Pressure rating

- 16 bar - PTFE+graphite flange face
- 40 bar - other PTFE based flange face

Process connection

- flanged DN50 to DN100
- flanged 2" to 4"
- other on request

Instrument connection

- 1/2" BSPP, NPT
- 1/4" BSPP, NPT
- M20x1,5
- other on request

Wetted parts material

- 304 (1.4301) stainless steel
- 316L (1.4404) stainless steel
- 316Ti (1.4571) stainless steel
- special materials on request: Hastelloy C276, Duplex, Monel, Tantalum, Titanium, Nickel
- flange face: PTFE, PTFE+graphite, PTFE+glass fibre, PTFE copolymer, other on request

Filling fluid

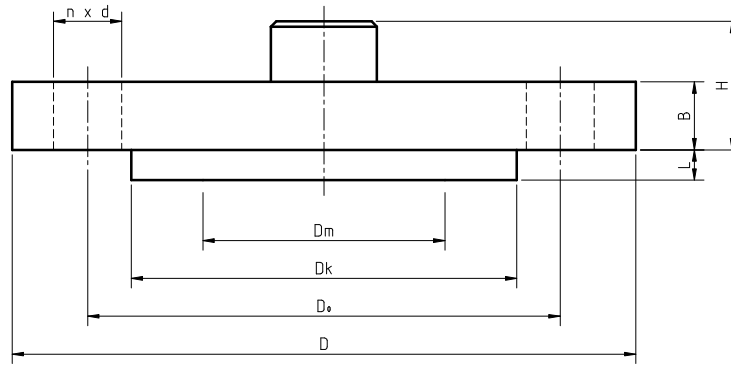
- silicone oil (max. 200°C)
- high temperature oil (max. 315°C)
- oil for vacuum service
- vegetable oil
- fluorine oil
- other on request

Optional capillary

- length up to 15m
- armored, axial entry
- 304 (1.4301) stainless steel

Options

- radiator
- radial capillary entry
- other on request



Dimensions for EN 1092-1 / DIN 2501 (in mm)

DN	PN ¹⁾	D _m	D _k	D _o	D	B	H	n	d
40	10/40	40	88	110	150	18	66	4	18
	63/100	40	88	125	170	26	74	4	22
50	10/40	48	102	125	165	20	68	4	18
	63	48	102	135	180	26	74	4	22
	100	48	102	145	195	28	76	4	26
80	10/16	75	138	160	200	20	37	8	18
	25/40	75	138	160	200	24	41	8	18
	63	75	138	170	215	28	45	8	22
	100	75	138	180	230	32	49	8	26
100	10/16	95	152	180	220	20	37	8	18
	25/40	95	162	190	235	24	41	8	26
	63	95	162	200	250	30	47	8	30
	100	95	162	210	265	36	53	8	33

¹⁾max. process pressure limited to 16 bar for PTFE+graphite flange face and 40 bar for other PTFE based materials

Dimensions for ASME B 16.5 (in mm)

DN	Class ¹⁾	D _m	D _k	D _o	D	B	H	n	d
1-1/2"	150	40	73	98,5	130	22	70	4	16
	300	40	73	114,5	155	22	70	4	22
	600	40	73	114,5	155	29,5	77,5	4	22
2"	150	48	92	120,5	150	20	68	4	20
	300	48	92	127	165	22,5	70,5	8	20
	600	48	92	127	165	32	80	8	20
3"	150	75	127	152,5	190	24	41	4	20
	300	75	127	168,5	210	29	46	8	22
	600	75	127	168,5	210	38,5	55,5	8	22
4"	150	95	158	190,5	230	24	41	8	20
	300	95	158	200	255	32	49	8	22
	600	95	158	216	275	45	62	8	26

¹⁾max. process pressure limited to 16 bar for PTFE+graphite flange face and 40 bar for other PTFE based materials

Ordering: model - process connection (DN, PN or Class, flange face type) - material (flange face, diaphragm, flange) - capillary length (if applicable) - instrument connection - other options or requests

For proper diaphragm seal manufacturing and calibration, process data - temperatures, pressures and media type - should be provided.